

# Snap Action, Watertight Miniature

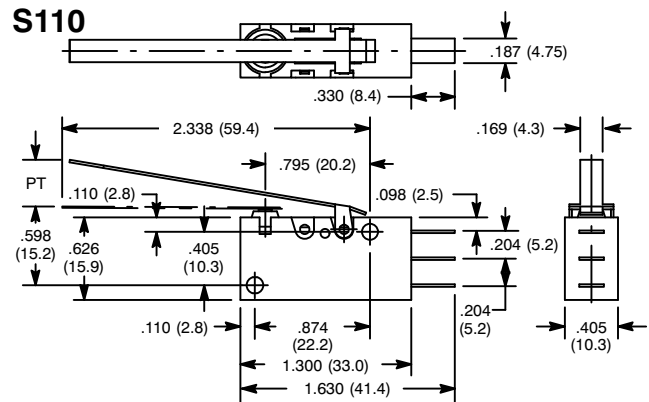


## Features

- Actuator: Long Hinge Lever
- Watertight Construction (Meets IP50 Requirements)
- RoHS Compliant



NTE Type No.	Circuitry	Max. Pre-Travel	Min. Over Travel	Max. Operating Force	Max. Differential	Diag No.
54-480WT	SPDT	0.35"	0.13"	60g	0.03"	S110
54-481WT	SPDT	0.35"	0.13"	60g	0.03"	S110



## Specifications

### Current Rating:

54-480WT: 5A 125/250VAC (Note: UL/CSA for 3 Amp Only),  
5A 30VDC, 0.4A 125VDC, 0.2A 250VDC

54-481WT: 0.1A 125VAC, 0.1A 30VDC

**Contact Resistance:** 100 Milliohms (max.) initial

**Insulation Resistance:** 100 Megohms (min.) at 500VDC

**Dielectric Strength (50/60Hz for 1 min.):**

Between Contacts of Same Polarity: 1000VAC

Between Each Terminal & GND: 1500VAC

**Temperature Rating:** -40°F to +194°F (-40°C to +90°C)

**Electrical Life:** 100,000 (5A Type); 1,000,000 (0.1A Type) cycles min.

**Mechanical Life:** 10,000,000 cycles min.

**Terminal Type:** Solder Lug and #187 Tab Terminals

# Snap Action, Watertight Miniature

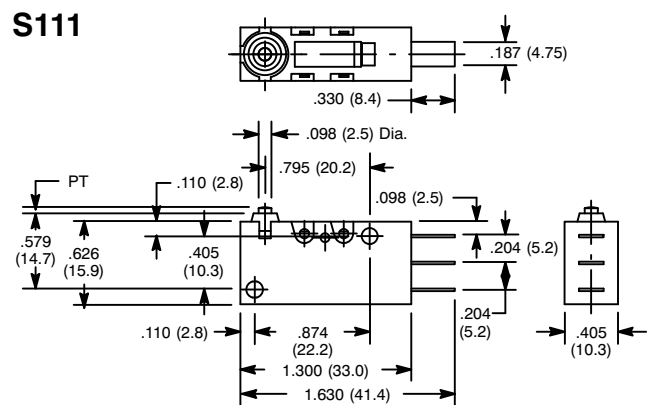


## Features

- Actuator: Pin Plunger
- Watertight Construction (Meets IP50 Requirements)
- RoHS Compliant



NTE Type No.	Circuitry	Max. Pre-Travel	Min. Over Travel	Max. Operating Force	Max. Differential	Diag No.
54-482WT	SPDT	0.05"	0.04"	200g	0.016"	S111
54-483WT	SPDT	0.05"	0.04"	200g	0.016"	S111



## Specifications

### Current Rating:

54-482WT: 5A 125/250VAC (Note: UL/CSA for 3 Amp Only),  
5A 30VDC, 0.4A 125VDC, 0.2A 250VDC

54-483WT: 0.1A 125VAC, 0.1A 30VDC

**Contact Resistance:** 100 Milliohms (max.) initial

**Insulation Resistance:** 100 Megohms (min.) at 500VDC

**Dielectric Strength (50/60Hz for 1 min.):**

Between Contacts of Same Polarity: 1000VAC

Between Each Terminal & GND: 1500VAC

**Temperature Rating:** -40°F to +194°F (-40°C to +90°C)

**Electrical Life:** 100,000 (5A Type); 1,000,000 (0.1A Type) cycles min.

**Mechanical Life:** 10,000,000 cycles min.

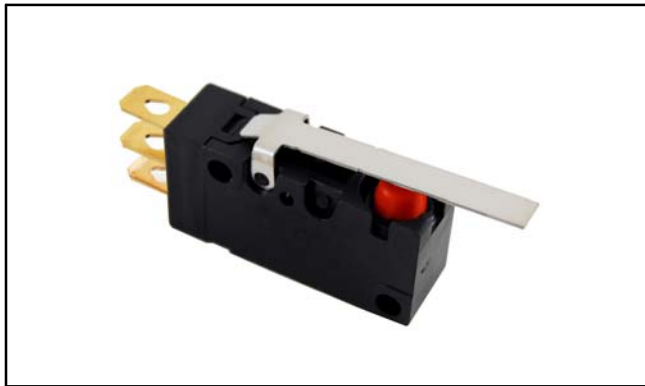
**Terminal Type:** Solder Lug and #187 Tab Terminals

# Snap Action, Watertight Miniature



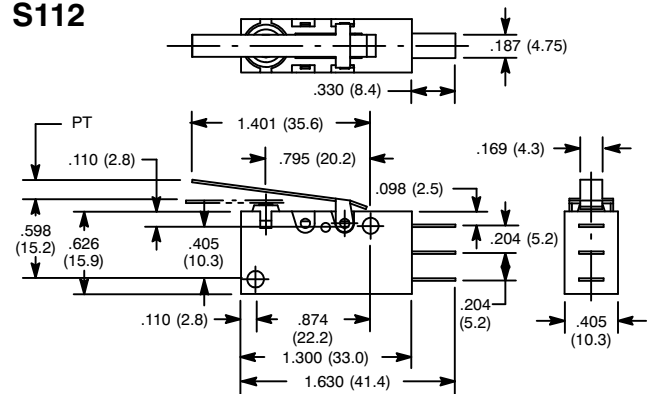
## Features

- Actuator: Hinge Lever
- Watertight Construction (Meets IP50 Requirements)
- RoHS Compliant



NTE Type No.	Circuitry	Max. Pre-Travel	Min. Over Travel	Max. Operating Force	Max. Differential	Diag No.
54-484WT	SPDT	0.16"	0.06"	120g	0.03"	S112
54-485WT	SPDT	0.16"	0.06"	120g	0.03"	S112

## S112



## Specifications

### Current Rating:

**54-484WT:** 5A 125/250VAC (Note: UL/CSA for 3 Amp Only), 5A 30VDC, 0.4A 125VDC, 0.2A 250VDC

**54-485WT:** 0.1A 125VAC, 0.1A 30VDC

**Contact Resistance:** 100 Milliohms (max.) initial

**Insulation Resistance:** 100 Megohms (min.) at 500VDC

**Dielectric Strength (50/60Hz for 1 min.):**

**Between Contacts of Same Polarity:** 1000VAC

**Between Each Terminal & GND:** 1500VAC

**Temperature Rating:** -40°F to +194°F (-40°C to +90°C)

**Electrical Life:** 100,000 (5A Type); 1,000,000 (0.1A Type) cycles min.

**Mechanical Life:** 10,000,000 cycles min.

**Terminal Type:** Solder Lug and #187 Tab Terminals

# Snap Action, Watertight Miniature



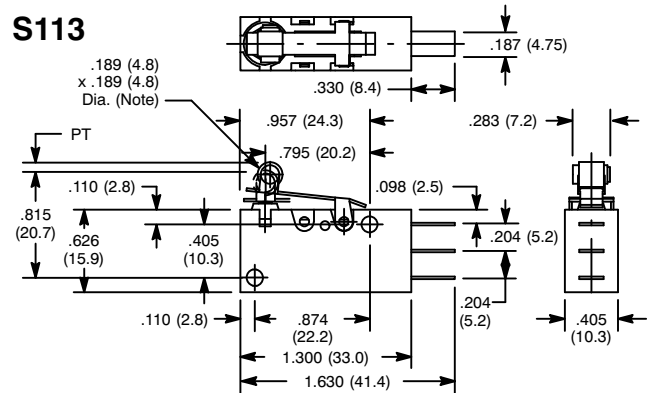
## Features

- Actuator: Short Hinge Roller Lever
- Watertight Construction (Meets IP50 Requirements)
- RoHS Compliant



NTE Type No.	Circuitry	Max. Pre-Travel	Min. Over Travel	Max. Operating Force	Max. Differential	Diag No.
54-486WT	SPDT	0.06"	0.03"	230g	0.02"	S113
54-487WT	SPDT	0.06"	0.03"	230g	0.02"	S113

## S113



Note: Oilless polyacetar resin roller

## Specifications

### Current Rating:

**54-486WT:** 5A 125/250VAC (Note: UL/CSA for 3 Amp Only), 5A 30VDC, 0.4A 125VDC, 0.2A 250VDC

**54-487WT:** 0.1A 125VAC, 0.1A 30VDC

**Contact Resistance:** 100 Milliohms (max.) initial

**Insulation Resistance:** 100 Megohms (min.) at 500VDC

**Dielectric Strength (50/60Hz for 1 min.):**

**Between Contacts of Same Polarity:** 1000VAC

**Between Each Terminal & GND:** 1500VAC

**Temperature Rating:** -40°F to +194°F (-40°C to +90°C)

**Electrical Life:** 100,000 (5A Type); 1,000,000 (0.1A Type) cycles min.

**Mechanical Life:** 10,000,000 cycles min.

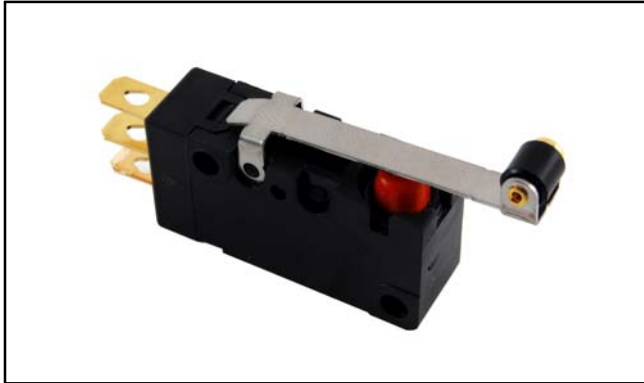
**Terminal Type:** Solder Lug and #187 Tab Terminals

# Snap Action, Watertight Miniature



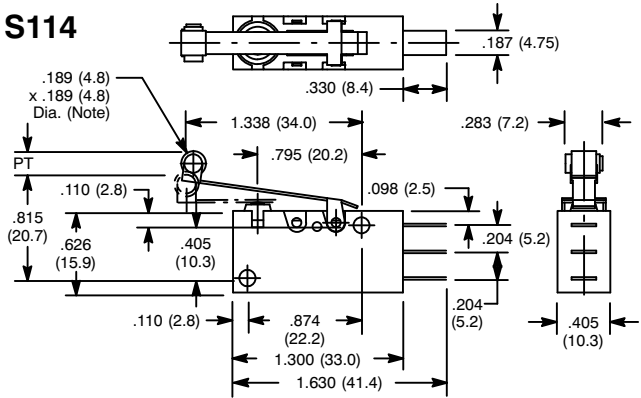
## Features

- Actuator: Hinge Roller Lever
- Watertight Construction (Meets IP50 Requirements)
- RoHS Compliant



NTE Type No.	Circuitry	Max. Pre-Travel	Min. Over Travel	Max. Operating Force	Max. Differential	Diag No.
54-488WT	SPDT	0.16"	0.06"	120g	0.03"	S114
54-489WT	SPDT	0.16"	0.06"	120g	0.03"	S114

## S114



Note: Oilless polyacetal resin roller

## Specifications

### Current Rating:

**54-488WT:** 5A 125/250VAC (Note: UL/CSA for 3 Amp **Only**),  
5A 30VDC, 0.4A 125VDC, 0.2A 250VDC

**54-489WT:** 0.1A 125VAC, 0.1A 30VDC

**Contact Resistance:** 100 Milliohms (max.) initial

**Insulation Resistance:** 100 Megohms (min.) at 500VDC

**Dielectric Strength (50/60Hz for 1 min.):**

**Between Contacts of Same Polarity:** 1000VAC

**Between Each Terminal & GND:** 1500VAC

**Temperature Rating:** -40°F to +194°F (-40°C to +90°C)

**Electrical Life:** 100,000 (5A Type); 1,000,000 (0.1A Type) cycles min.

**Mechanical Life:** 10,000,000 cycles min.

**Terminal Type:** Solder Lug and #187 Tab Terminals