

# R95-1 13



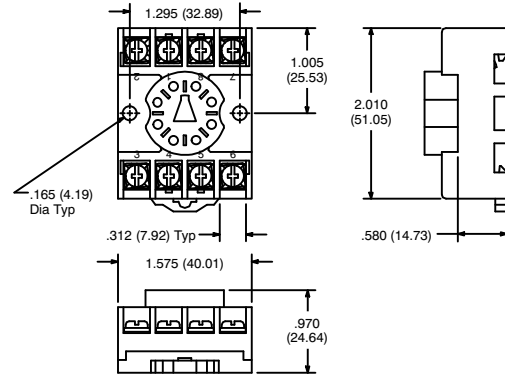
## 8-Pin Octal Socket

### Features

- Panel/Surface Mount
- DIN Rail Mountable
- Pressure Clamp Screws

### Electrical Rating:

300 Volts, 10 Amps



# R95-1 14



## 11-Pin Octal Socket

### Features

- Panel/Surface Mount
- DIN Rail Mountable
- Pressure Clamp Screws

### Electrical Rating:

300 Volts, 10 Amps

